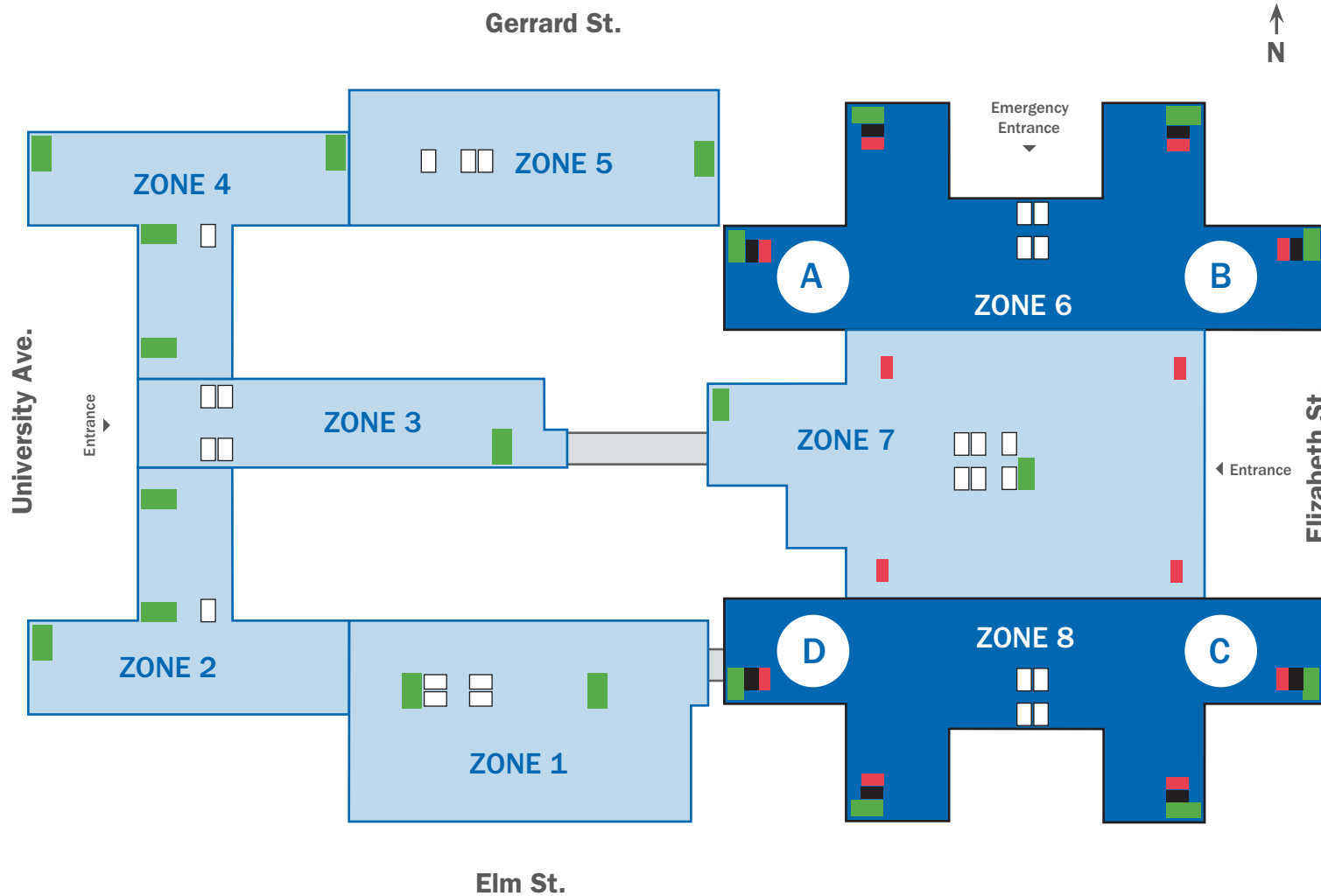


# Hospital Zones



\*The second number or letter in any four digit room number sequence indicates your location. When evacuating, in the event of fire or for any reason, always pay attention to overhead announcements and avoid heading toward locations close to where fire has broken out. Follow and refer to Code Red and Code Green emergency measure procedures as detailed in the SickKids Emergency Measures Manual. Your first priority is to ensure that you make your way to an area where you, patients, other employees or visitors are safe.

In the Atrium the Zone 6 & 8 fire zones are sub-divided into smaller zones A & B and C & D.

## LEGEND

-   
 PULL STATION
-   
 EXTINGUISHER/  
 FIRE HOSE  
 CABINET
-   
 ELEVATORS
-   
 EXIT  
 STAIRWELLS
-   
 PATIENT UNITS

This number indicates the Hospital Zone

