

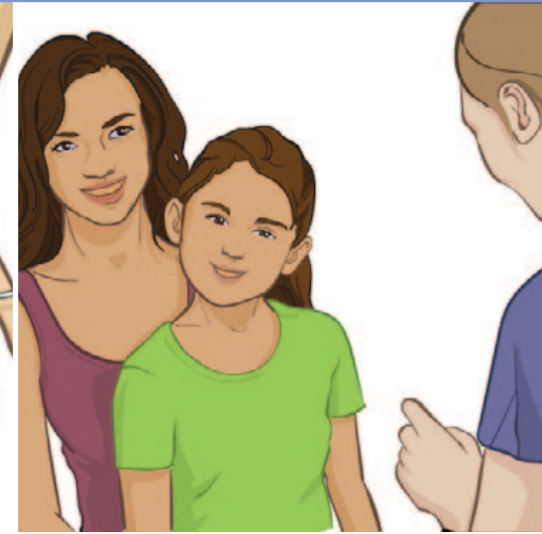
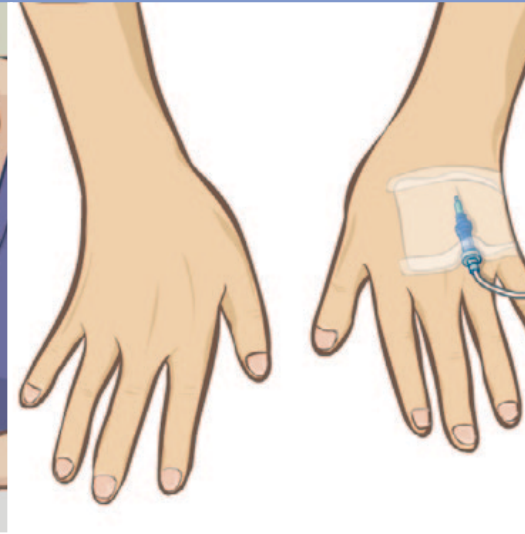
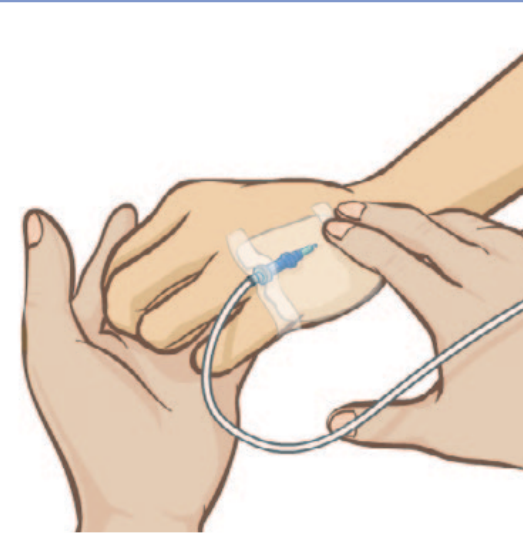
IV Care with

T
TOUCH

L
LOOK

C
COMPARE

+
PLUS



TOUCH every 60 minutes

IV site should feel:

- Soft
- Warm
- Dry
- Pain free

LOOK every 60 minutes

IV site should be:

- Uncovered
- Without redness
- Without blanching (temporary whitening of skin when touched)

COMPARE every 60 minutes

IV site should be:

- Without swelling
- Same size as the other side

PLUS engage patients/families

- Provide IV care teaching
 - Hourly checks (even when sleeping)
- Ensure TLC assessment at handover
- Educate patient/family to speak up if they notice:
 - Swelling/firmness, pain/numbness, redness/bruising, or wetness